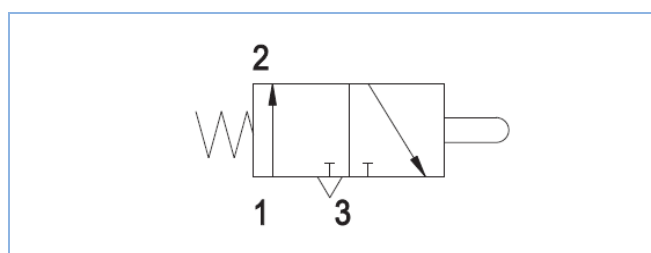


Specifications

Part no.	14700506	
Mounting	On cradle	
Max. working pressure	10	bar
Air tube size	Ø6	mm
Temperature range	min / max	-40 / +80 °C
Weight (incl. bracket)	0,6	kg
Stroke	15	mm
Bolt adjustment length	18	mm

Pneumatic symbol



Part list

Included with knock off:	Qty.
Mounting Bracket	1
Mounting kit:	-
- Hex. Bolt M8x30	2
- Washer M8	2
- Nyloc Nut M8	2
- Washer M6	2
- Nyloc Nut M6	2
- Adjustable Bolt M6x30	1
- Adjustable Bolt M6x40	1
- Counter nut M6	1

Spare parts

Part No.	Description	Qty
14700507	Seal kit	1
14810517	Air coupling straight - Ø6mm	2
14810566	Air coupling 90 degrees -Ø6mm	1

Technical notes

Make sure inlet air is dry and clean

Related documentation

Mounting instructions: KNO-0020

Repair instructions: KNO-0005