

# HYVA CYLINDER

714 18 349



type: **ULB 110-5-1240-K169-40-1/2"-F-HC**

tipping weight: **4-9 ton**

page # 1 / 1

<p>Stage diameters</p> <p><b>110</b></p> <p><b>93</b></p> <p><b>77</b></p> <p><b>61</b></p> <p><b>45</b></p>	<p>flange detail</p>	<p>front view cylinder</p>	<table border="1"> <tr><td>A</td><td>150</td></tr> <tr><td>ØC</td><td>130</td></tr> <tr><td>G¹</td><td>445</td></tr> <tr><td>I</td><td>276</td></tr> <tr><td>K¹</td><td>169</td></tr> <tr><td>M¹</td><td>79</td></tr> <tr><td>ØQ</td><td>45</td></tr> <tr><td>S</td><td>284</td></tr> <tr><td>ØW</td><td>40</td></tr> <tr><td>X</td><td>40</td></tr> </table>	A	150	ØC	130	G¹	445	I	276	K¹	169	M¹	79	ØQ	45	S	284	ØW	40	X	40
A	150																						
ØC	130																						
G¹	445																						
I	276																						
K¹	169																						
M¹	79																						
ØQ	45																						
S	284																						
ØW	40																						
X	40																						

<sup>1</sup>including 20 mm pull-out [tol. -5; +30 mm]

<sup>2</sup>cylinder is delivered including oil inlet swivel adapter and cup

## specifications

total stroke <sup>1</sup>	1240 mm
dry weight cylinder only	32 kg
total volume	7.1 L
working volume	6.3 L
maximum pressure	190 bar
maximum pump flow	24 l/min
maximum allowable thrust first stage <sup>3</sup>	8.0 ton
oil inlet	1/2" BSP

## technical notes

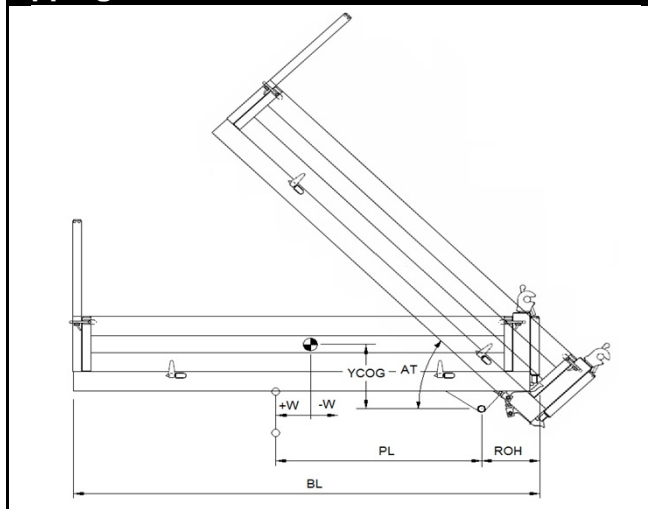
This cylinder is a lifting device only and may not be used as a structural member or be subjected to side load. Side load and/or poor alignment might result in cylinder leakage. Hyva therefore strongly recommends the use of a cradle, even in instances where the cylinder only tips to the rear or to the side.

The cylinder is painted black RAL9005. For suitable hydraulic oils, please refer to data sheet OIL-0011. For details of available brackets and cradles, please refer to data sheet 015BRA07.

Detailed calculations can be made using the HYVA Tipper Program, freely available from [tipper.hyva.com](http://tipper.hyva.com).

<sup>3</sup>The cylinder thrust on the first stage (from the HYVA Tipper Program) must not exceed the maximum allowable (see specifications above).

## tipping view



## tipping weight

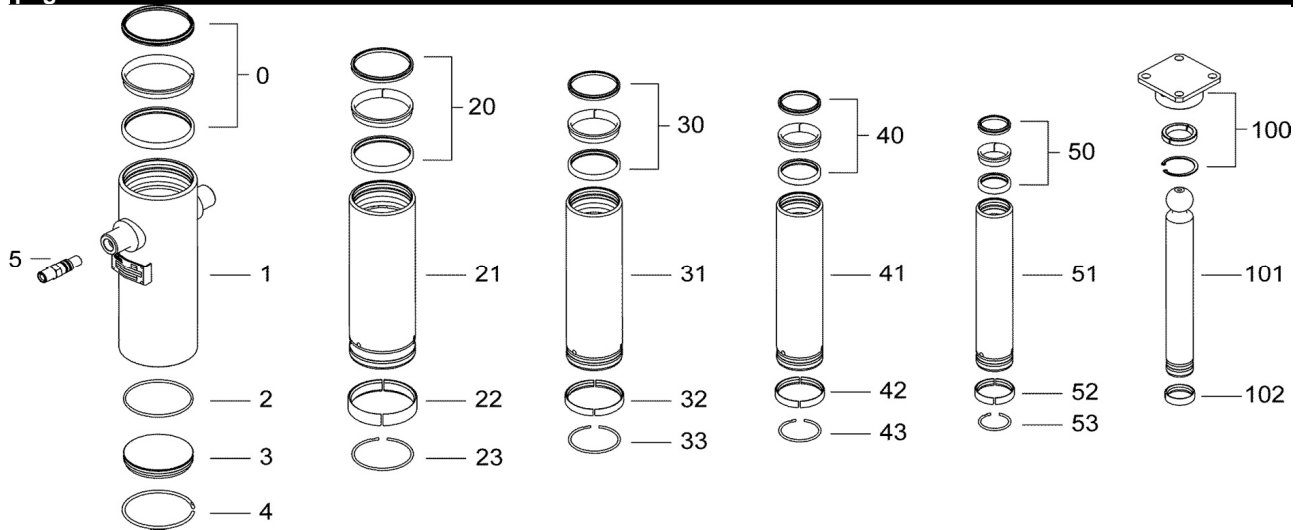
AT	46			deg	52		
PL	1620			mm	1430		
YCOG	450			mm	450		
ROH	450			mm	450		
BL	4600	4140	3760	mm	4180	3760	3420
CYL w.r.t. COG (W)	-230	0	190	mm	-210	0	170
Tipping weight for full stroke of 46°				Tipping weight for full stroke of 52°			
Tipping weight	4	5	5	ton	4	5	6
Tipping weight for second last stage, up to 37°				Tipping weight for 2nd last stage, up to 42°			
Tipping weight	6	8	9	ton	7	8	9

# HYVA CYLINDER

714 18 349

type ULB 110-5-1240-K169-40-1/2"-F-HC

page # 2 / 2



## Spare part list

Pos	Part no.	Description	Qty.
1	73518350	BASE 129-0366-N0090	1
2	01226674	O-RING 107 X 4 NBR 70 SHORE A	1
3	73101280	BOTTOM PLATE UL 129	1
4	73110129	SNAPRING BASE UL 129	1
5	73103000	OIL INLET ADAPTOR 1/2"OT+O-RING	1
21	73618351	STAGE 110-0338-HC	1
22	71807110 K	SLIDER FL 110/GF 110 (2 X 1/2)	1
23	73110110 K	INNER STOPRING/LIFTRING UL 110	1
31	73617351	STAGE 093-0338-HC	1
32	73111093 K	SLIDER UL 093 (2x1/2)	1
33	73110093 K	INNER STOPRING/LIFTRING UL 093	1
41	73616351	STAGE 077-0338-HC	1
42	73111077 K	SLIDER UL 077 (2x1/2)	1
43	73110077 K	INNER STOPRING/LIFTRING UL 077	1
51	73615351	STAGE 061-0338-HC	1
52	73111061 K	SLIDER UL 061 (2x1/2)	1
53	73110061 K	INNER STOPRING/LIFTRING UL 061	1

## Spare part list

Pos	Part no.	Description	Qty.
100	01745110	RETAINER KIT ULB FLANGE D.45	1
101	73414351	PISTON B 045-0371-HC	1
102	73111045 K	SLIDER UL 045 (2x1/2)	1

## Seal kit complete

Part no.	Description
719 06 850K	Complete packset: Consists of all packsets with packset grease and o-ring.