

HYVA GEAR PUMPS

EXTERNAL GEAR TYPE

Hyva

page # 1 / 2

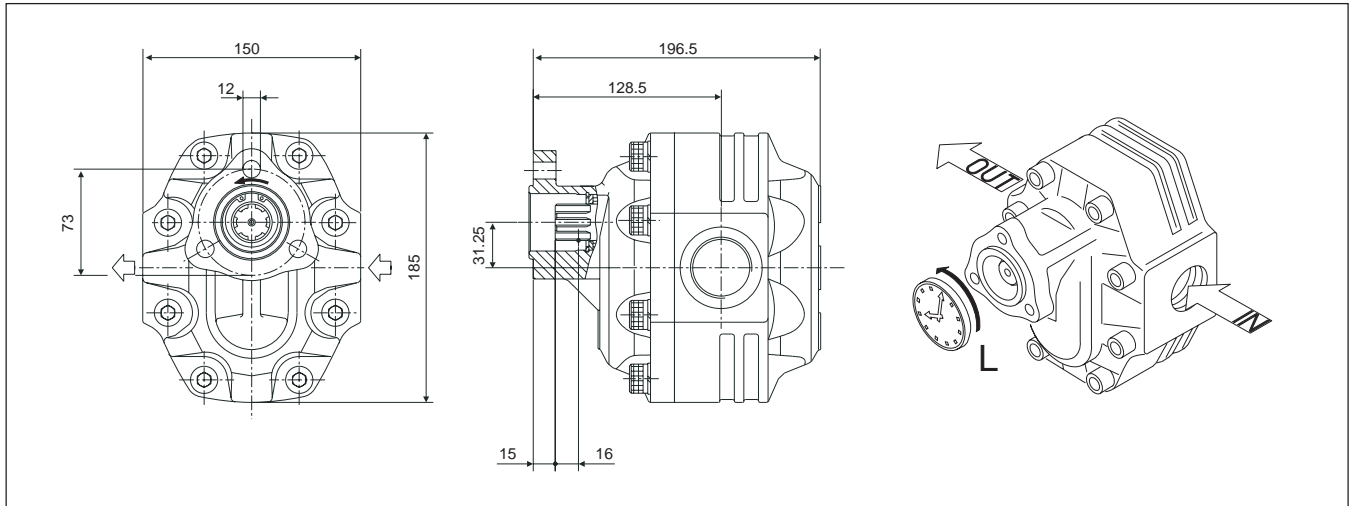
gear pump type :

part number :

rotation : anti clock wise seen from front side of pump

gear pump 087L - L - 3H

145 63 310

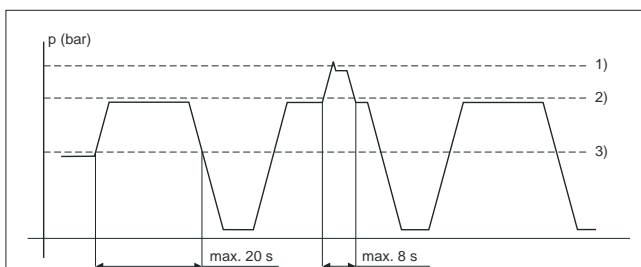


specifications

displacement per revolution	:	85,95	cm ³
maximum peak pressure	:	290	bar
maximum intermittent pressure	:	280	bar
maximum continuous pressure	:	260	bar
maximum speed without load	:	4000	min ⁻¹
max. speed at intermittent press.	:	2700	min ⁻¹
min. speed at intermittent press.	:	300	min ⁻¹
oil temperature range	:	-25 ⇄ 80	°C
inlet pressure range (suction side)	:	0,7 ⇄ 3	bar (abs)
recommended oil viscosity range	:	12 ⇄ 100	mm ² /s (cSt)
maximum starting viscosity	:	750	mm ² /s (cSt)
filtration :			
- working pressure < 200 bar	:	25	µm
- working pressure > 200 bar	:	10	µm
connection :			
- inlet - straight internal thread	:	1,25	" B.S.P.
- outlet - straight internal thread	:	1	" B.S.P.
minimum suction hose bore diameter	:	1,75	inch
shaft UNI 8953, 21 UNI 221 spline	:	6*21*25	mm
mass	:	21,5	kg
noise level at 900 min ⁻¹ and 100 bar	:	65,5	dB(A)
noise level at 1500 min ⁻¹ and 100 bar	:	70	dB(A)

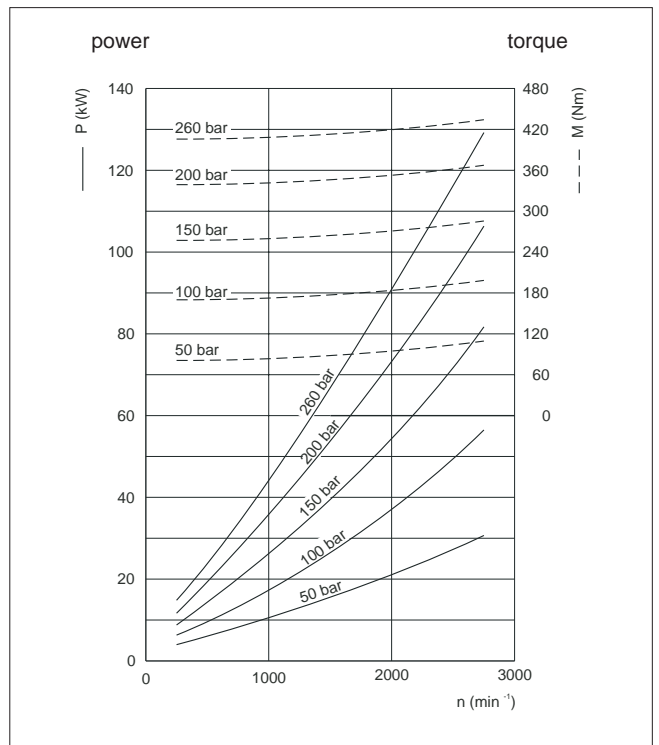
efficiency diagram on request

pressure definition

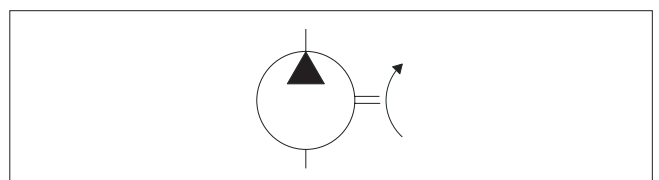


1) max. peak pressure 2) max. intermittent pressure 3) max. continuous pressure

power and torque



hydraulic pump symbol



subject to change without notice

DO-E 14563310 / 97 08 26 / RV E

HYVA GEAR PUMPS

EXTERNAL GEAR TYPE

Hyva

gear pump type :

gear pump 087L - L - 3H

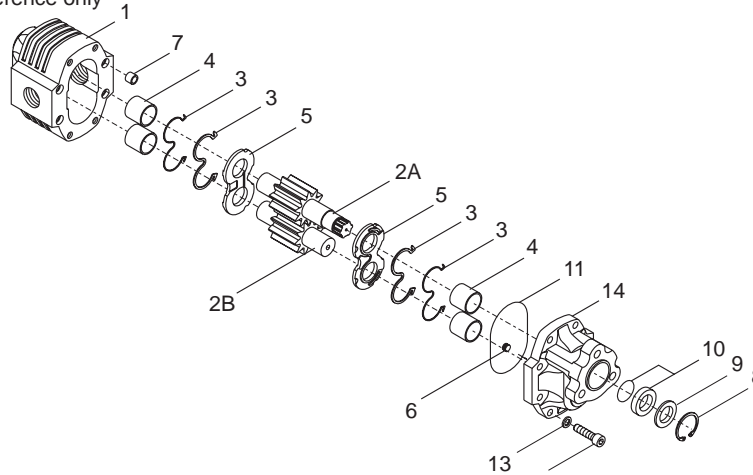
part number :

145 63 310

page # 2 / 2

rotation : anti clock wise seen from front side of pump

drawing for part number reference only



spare part list gear pump

145 63 310

pos.	code no.	description	qty.
1	022 10 732	housing	1
2A	023 27 475	driving gear	1
2B	023 27 481	driven gear	1
3	023 96 519	seal kit	2
4	024 24 250	sleeve bearing	4
5	022 59 370	thrust plate	2
6	023 71 850	plug	1
7	024 93 245	dowel pin	4
8	024 08 100	circlip	1
9	024 57 950	washer	1
10	024 04 820	shaft seal	1
11	023 91 660	housing O-ring seal	1
12	023 59 215	allen bolt	8
13	023 74 810	spring washer	8
14	022 32 690	cover	1
	024 60 070	seal kit (comprises 3, 10 & 11)	1

general information and mounting possibilities.

The mentioned data on page 1 is for mineral based oil.
For other fluids, please contact our engineering dept.

The filtration as mentioned is for tippers only. For different applications we advise filtration according ISO 4406 class 17/14.

To avoid cavitation, the suction hose must be kept as short and straight as possible, and the minimum oil level in the oil tank must be above the inlet of the pump.

The direction of rotation of this pump can be changed by a skilled (hydraulic) engineer.
For information please contact our engineering dept.

To mount this pump to a P.T.O. with a 3-hole "Italian" triangular flange 21 UNI 221:

use mounting kit 020.050.010H

To mount this pump to a P.T.O. with an ISO 90 mm flange connection **without** radial load (e.g. ZF N71/1C) or to mount it to a drive-shaft for open shaft drive:

use 4-hole adapter kit L034.

To mount this pump to a P.T.O. with an ISO 90 mm flange connection **with** radial load (e.g. ZF N71/2C):

use 4-hole adapter kit L036.