

HYVA GEAR PUMPS



EXTERNAL GEAR TYPE

Hyva

gear pump type :

gear pump 043L - R - 3H

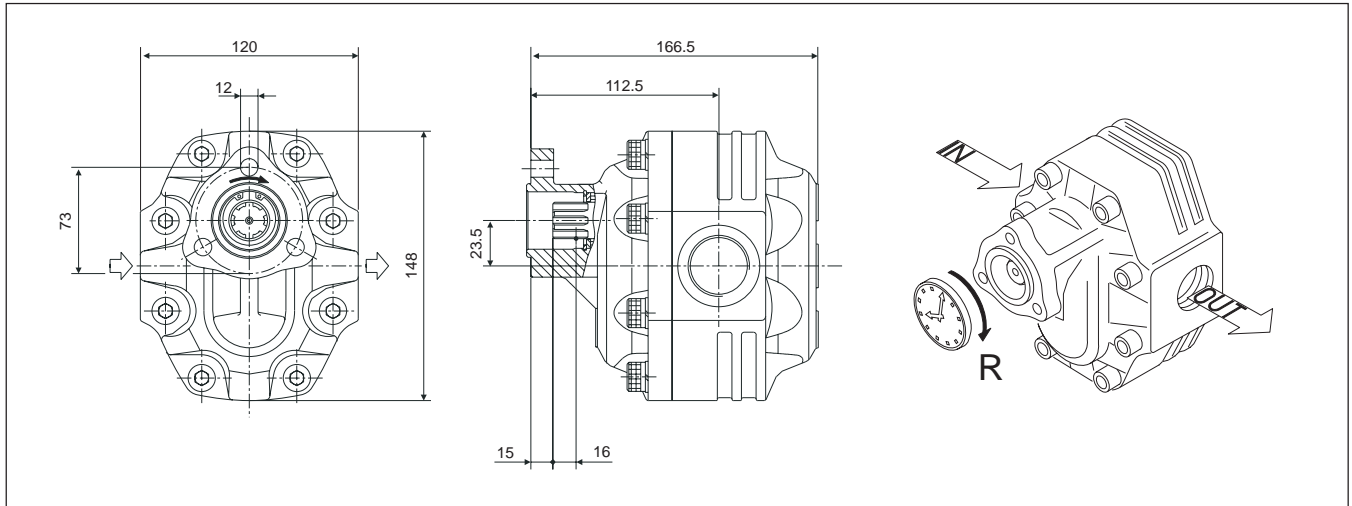
part number :

145 63 220

page # 1 / 2

rotation :

clock wise seen from front side of pump

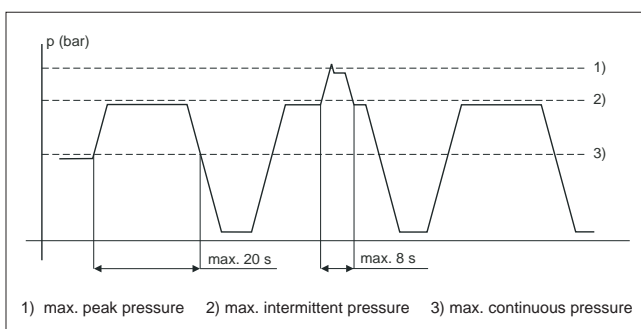


specifications

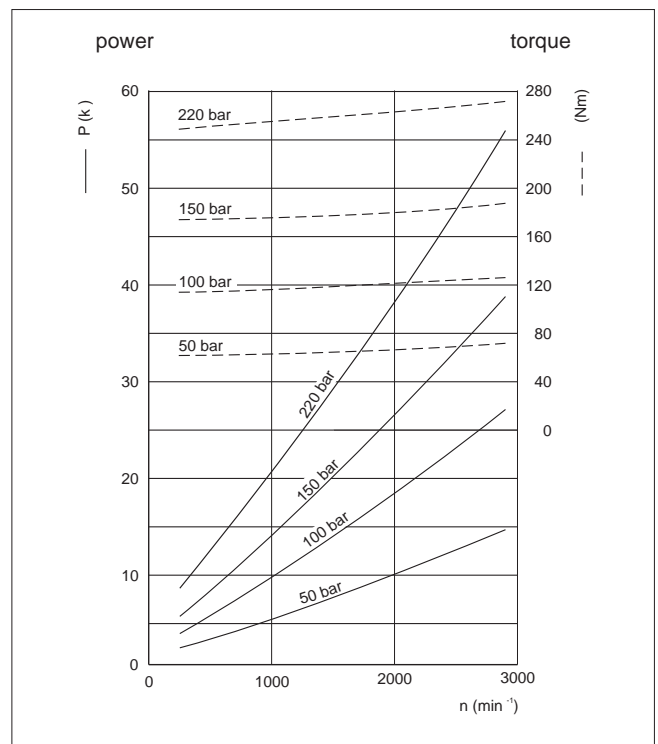
displacement per revolution	:	43,77	cm ³
maximum peak pressure	:	300	bar
maximum intermittent pressure	:	290	bar
maximum continuous pressure	:	270	bar
maximum speed without load	:	3500	min ⁻¹
max. speed at intermittent press.	:	2500	min ⁻¹
min. speed at intermittent press.	:	300	min ⁻¹
oil temperature range	:	-25 ⇄ 80	°C
inlet pressure range (suction side)	:	0,7 ⇄ 3	bar (abs)
recommended oil viscosity range	:	12 ⇄ 100	mm ² /s (cSt)
maximum starting viscosity	:	750	mm ² /s (cSt)
filtration :			
- working pressure < 200 bar	:	25	m
- working pressure > 200 bar	:	10	m
connection :			
- inlet - straight internal thread	:	0,75	" B.S.P.
- outlet - straight internal thread	:	0,75	" B.S.P.
minimum suction hose bore diameter	:	1,75	inch
shaft UNI 8953, 21 UNI 221 spline	:	6*21*25	mm
mass	:	11,9	kg
noise level at 900 min ⁻¹ and 100 bar	:	62,5	dB(A)
noise level at 1500 min ⁻¹ and 100 bar	:	65	dB(A)

efficiency diagram on request

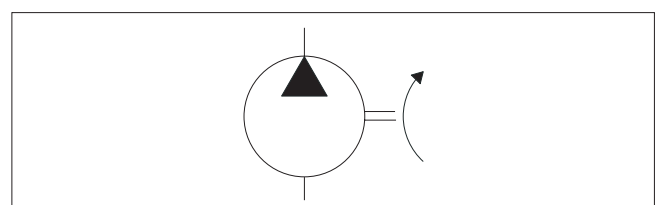
pressure definition



power and torque



hydraulic pump symbol



subject to change without notice

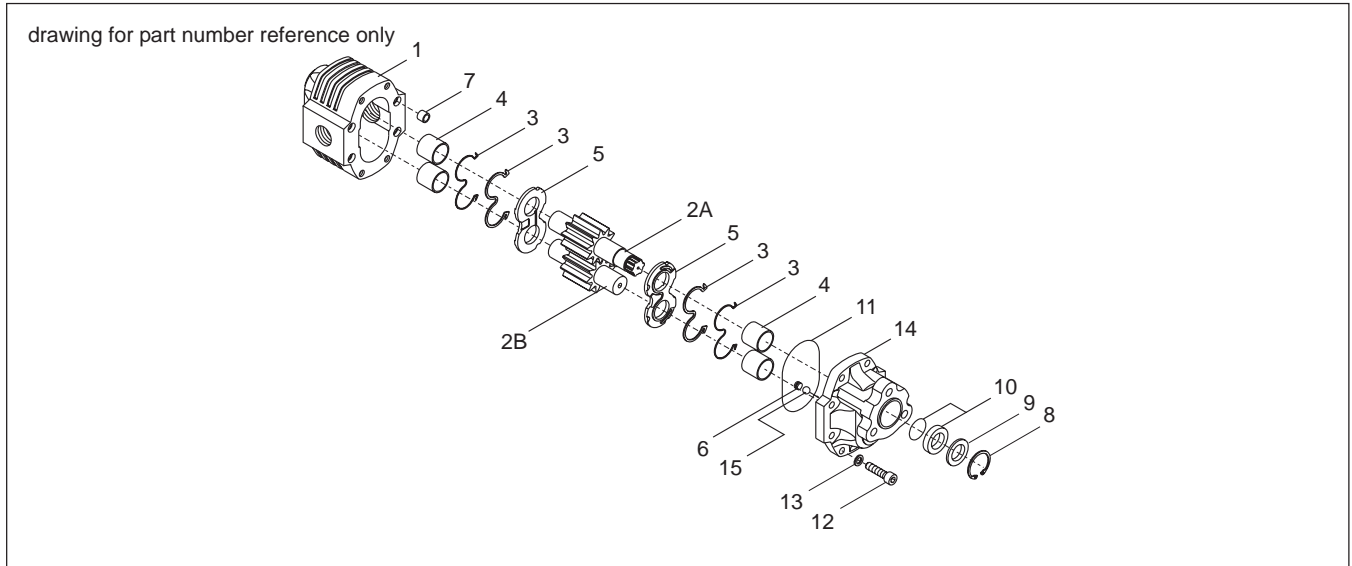
DO-E 14563220 / 03 09 12 / RV AA

HYVA GEAR PUMPS



EXTERNAL GEAR TYPE

Hyva	gear pump type :	gear pump 043L - R - 3H
page # 2 / 2	part number :	145 63 220
	rotation :	clock wise seen from front side of pump



spare part list gear pump 145 63 220

pos.	code no.	description	qty.
1	022 10 709	housing	1
2A	023 27 429	driving gear	1
2B	023 27 449	driven gear	1
3	023 96 517	seal kit	2
4	024 24 260	sleeve bearing	4
5	022 59 350	thrust plate	2
6	023 71 850	plug	1
7	024 92 150	dowel pin	4
8	024 08 100	circlip	1
9	024 57 950	washer	1
10	024 04 820	shaft seal	1
11	023 95 800	housing O-ring seal	1
12	023 51 850	allen bolt	8
13	023 74 510	spring washer	8
14	022 32 630	cover	1
15	023 85 700	ball	1
	024 60 060	seal kit (comprises 3, 10 & 11)	1

general information and mounting possibilities.

The mentioned data on page 1 is for mineral based oil.
For other fluids, please contact our engineering dept.

The filtration as mentioned is for tippers only. For different applications we advise filtration according ISO 4406 class 17/14.

To avoid cavitation, the suction hose must be kept as short and straight as possible, and the minimum oil level in the oil tank must be above the inlet of the pump.

The direction of rotation of this pump can be changed by a skilled (hydraulic) engineer.
For information please contact our engineering dept.

To mount this pump to a P.T.O. with a 3-hole "Italian" triangular flange 21 UNI 221:

use mounting kit 020.050.010H

To mount this pump to a P.T.O. with an ISO 90 mm flange connection **without** radial load (e.g. ZF N71/1C) or to mount it to a drive-shaft for open shaft drive:

use 4-hole adapter kit L034.

To mount this pump to a P.T.O. with an ISO 90 mm flange connection **with** radial load (e.g. ZF N71/2C):

use 4-hole adapter kit L036.