

# HYVA CYLINDER



715 38 643

Front end cylinder with eye

type

FE 214-4-07220-015B-K2162-HC

tipping weight

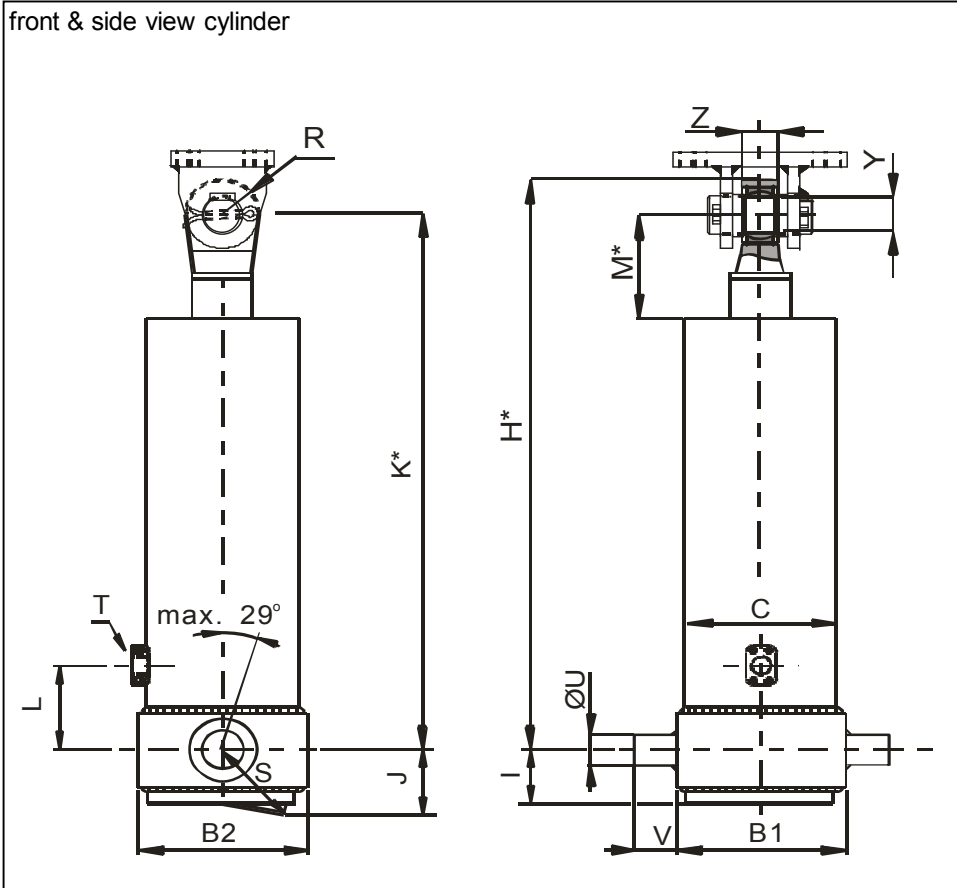
77-90 ton

page # 1 / 2

closed length (K)

2157-2192 mm

front & side view cylinder



	1	2	
A			mm
B	270	273	mm
C	238		mm
D			mm
E			mm
F			mm
G*			mm
H*	2224		mm
I	85		mm
J	135		mm
K*	2162		mm
L	290		mm
M*	100		mm
N			mm
O			mm
P			mm
Q			mm
R	62		mm
S	157		mm
T	1" SAE		
U	65		mm
V	65		mm
W			mm
X			mm
Y	60		mm
Z	52		mm

\*incl.20 [-5;+30] mm pull out on piston

## specifications

weight cylinder only	432 kg
total volume	202 L
working volume	189 L
maximum pressure	170 bar
maximum pump flow	190 L/min
maximum cylinder angle to front	30 °
maximum thrust first stage**	45 ton

\*\*when cyl. mounted at a large angle, thrust first stage may become too high: see Hyva Tipper Program

## technical notes

This cylinder is a lifting device only and may not be used as structural member or be subject to side load. Working pressure depends on application; never exceed maximum pressure stated. Cylinder is painted black (RAL9005). Max duration of extension 0.5 hours (excluded HC). See specification sheet CYL-0019 for mounting instructions, OIL-0011 for oil specifications and 015BRA01 for bracket specifications.

extension	1	2	3	4	5	6	7	8	9	
effective diameter [mm]	214	191	169	149						total
stroke [mm]	1790	1810	1810	1810						7220

## tipping weight

tipping weight at maximum pressure of 170 bar and C is 158 mm

BL (body length); OH (rear overhang); X=Ycog (vert. pos. centre of gravity); Qo (pivot length); C (bracket length);  At = stroke x 60 / Qo	BL	9500			9300			9100		
	OH	200	500	800	200	500	800	200	500	800
At	46	47	49	47	49	50	48	50	52	
Ycog										
600	77	81	87	78	83	88	79	84	90	
900	81	86		82	88		83	89		
1200	85			87			88			

# HYVA CYLINDER

715 38 643

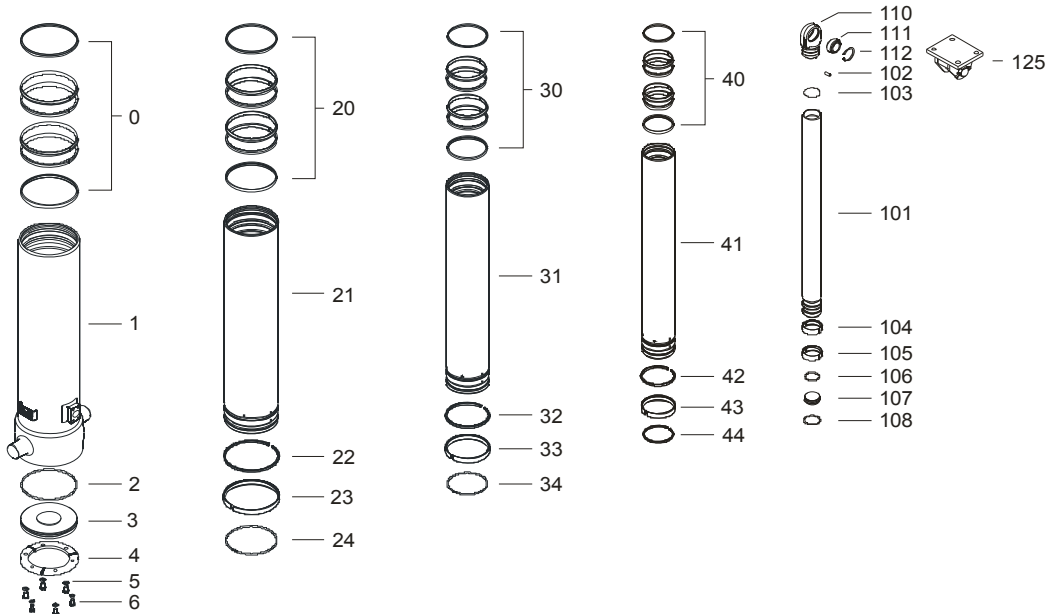


Front end cylinder with eye

type

FE 214-4-07220-015B-K2162-HC

page # 2 / 2



## Spare part list

Pos	Part no.	Description	Qty.
0	71802238 K	PACKSET FL 238	01
1	72509872	BASE 238-2137-4/4SAE-290	01
2	71870050 K	SEAL BOTTOM PLATE 238	01
3	71821238	BOTTOM PLATE 238	01
4	71820238	LOCKING PLATE 238	03
5	01732523 K	SPRING WASHER M12 SET	01
6	01732020 K	BOLT M12 X 1.25 X 25 SET	01

20	71802214 K	PACKSET FL 214	01
21	72608871	STAGE 214-2090-HC	01
22	71811214 K	OUTER STOPRING FL 214	01
23	71807214 K	SLIDER FL 214	01
24	71813214 K	LIFTRING FL 214x6	01

30	71802191 K	PACKSET FL 191	01
31	72607871	STAGE 191-2090-HC	01
32	71811191 K	OUTER STOPRING FL 191	01
33	71807191 K	SLIDER FL 191	01
34	71813191 K	LIFTRING FL 191x5	01

## Spare part list

Pos	Part no.	Description	Qty.
40	71802169 K	PACKSET FL 169	01
41	72606871	STAGE 169-2090-HC	01
42	71811169 K	OUTER STOPRING FL 169	01
43	71807169 K	SLIDER FL 169	01
44	71813169 K	LIFTRING FL 169x5	01

101	72405881	PISTON E 149-2170-HC	01
102		NOT APPLICABLE	
103		NOT APPLICABLE	
104	71811149 K	OUTER STOPRING FL 149	01
105	71807149 K	SLIDER FL 149	01
106		NOT APPLICABLE	
107		NOT APPLICABLE	
108		NOT APPLICABLE	
110		NOT APPLICABLE	
111	71875460	SPHERICAL BEARING D.60 MAINT. FREE	01
112	01770580	CIRCLIP 90 GE 60 DO / GE 50 FW DIN 472	01

125	01506789	TOP BRACKET FE(E) 191-214 SPECIAL PIN	01
-----	----------	---------------------------------------	----

## Seal kit complete:

Part no.	Description
71901840 K	Seal kit complete: consists of all packsets with packset grease, O-rings and Pin (pos.102)

## Notes:

The inner and outer stoprings are pre-mounted in the grooves on spare stages and pistons. Therefore, when ordering new tubes, it is not required to order stopring separately.