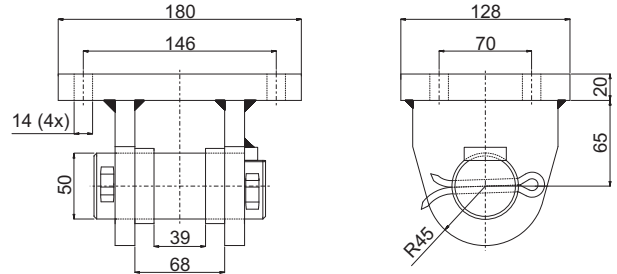
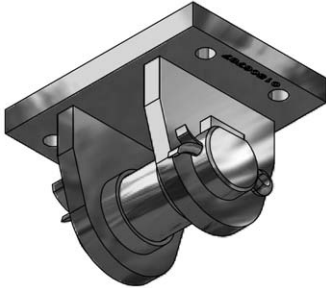


# Specific Top Brackets (Clevis)

Front end cylinder Top brackets

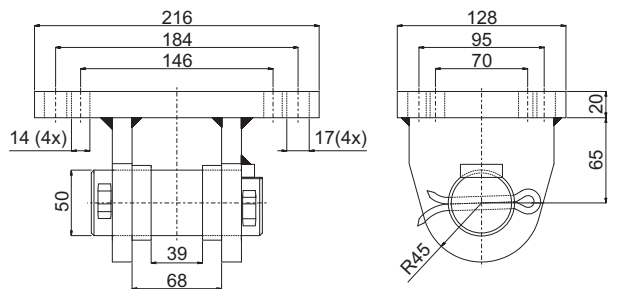
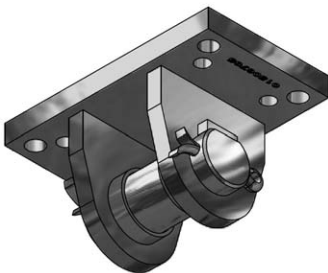
Note : Please verify quoted dimensions with your local Hyva subsidiary or agent prior to use

## Top bracket for cylinder type FE/FEE/FSE 110/118/129



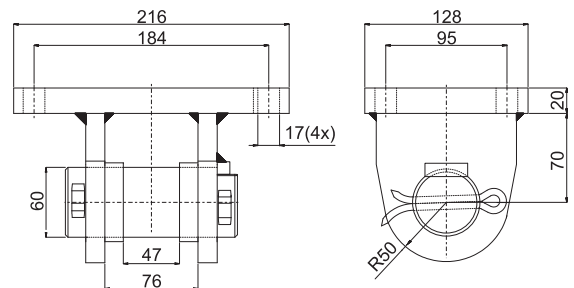
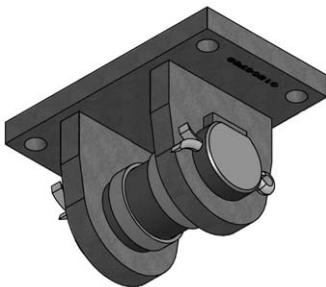
Bracket Type	Part no. Bracket	Mass (Kg)	Part no. Replacement axle kit
Top bracket	015 06 787	7.6	015 06 776

## Top bracket for cylinder type FE/FEE/FSE 137/149/157/169/179-5/191-5



Bracket Type	Part no. Bracket	Mass (Kg)	Part no. Replacement axle kit
Top bracket	015 06 785	8.2	015 06 776

## Top bracket for cylinder type FE/FEE/FSE 179-4/191-4/202/214



Bracket Type	Part no. Bracket	Mass (Kg)	Part no. Replacement axle kit
Top bracket	015 06 789	10.1	-

## General information

**Note:**

- The filler rings, pin and split pins are included.
- Brackets are painted black (RAL 9005 / gloss 25%).
- Weight can vary as per production process.
- For mounting, see instructions CYL-0031, CYL-0032 or CYL-0033.